

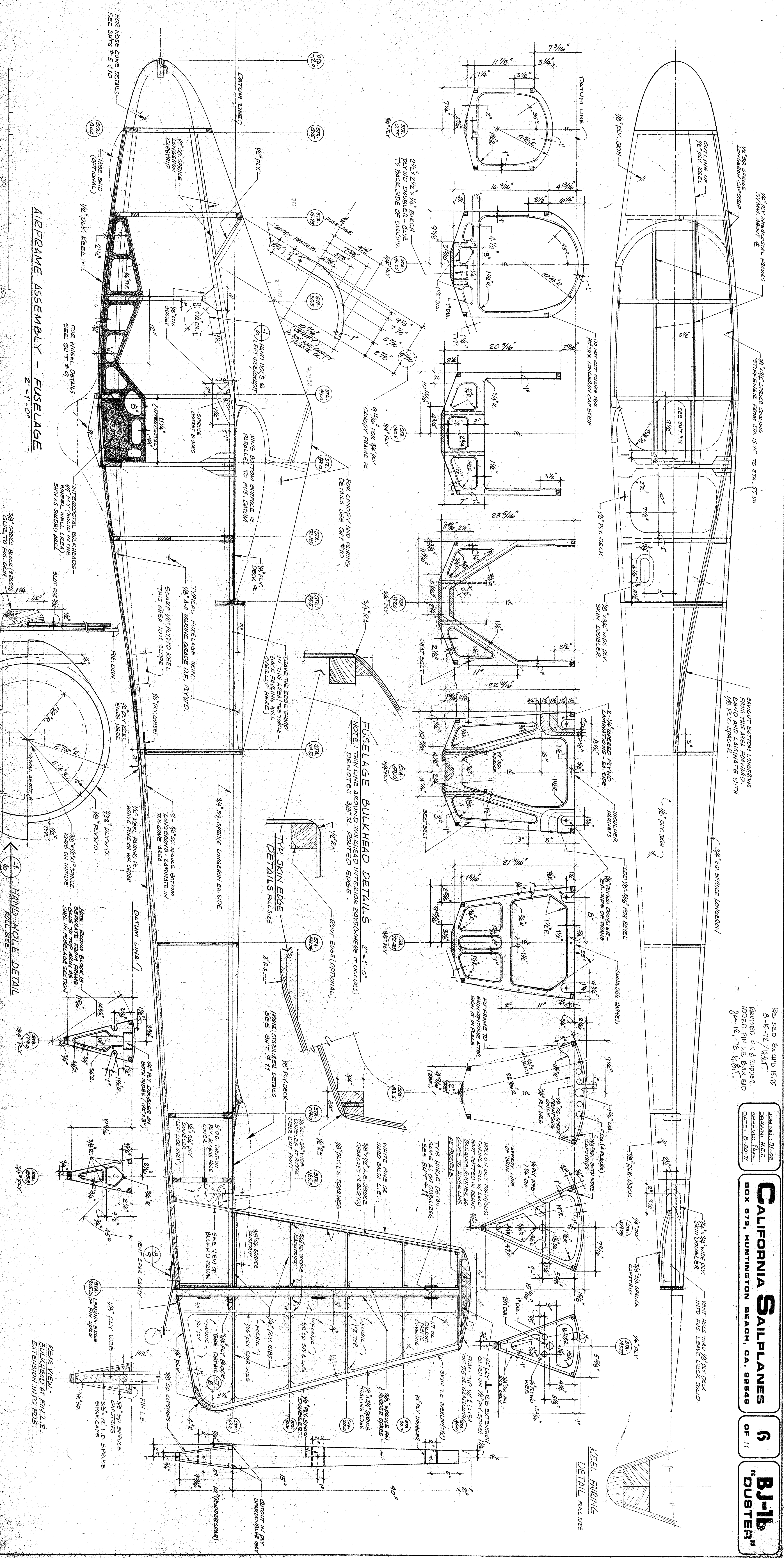
Revised 8/24/15 15:15  
 8-16-72 / HET  
 REUSED FIN & RUBBER  
 ADDED FIN L.E. BULKHEAD  
 JAN. 12, '78 K.B.11

JOB NO.: 71-02  
 DRAWN: HET  
 APPROVED: HET  
 DATE: 8-20-71

**CALIFORNIA SAILPLANES**  
 BOX 679, HUNTINGTON BEACH, CA. 92648

**6**  
 OF 11

**BJ-1b**  
 "DUSTER"



**AIRFRAME ASSEMBLY - FUSELAGE**  
 2-41-01

**HAND HOLE DETAIL**

**KEEL FAIRING DETAIL FULL SIZE**

**REAR VIEW - BULKHEAD AT FIN L.E. EXTENSION INTO FOS.**